



BENSON

...because performance matters™



BENSON
...because performance matters™

Established in 1980, Benson Steel provides an extensive range of services including design, supply, fabrication and erection of structural steel.

Distinguished for tailoring projects to suit each client's unique and custom requirements, Benson Steel has applied our unique expertise to successfully complete award-winning projects throughout Canada and abroad.

WE TURN IDEAS INTO WORKS OF ART

We are an award winning company focused on delivering extraordinary services and products for every project, every time.

At Benson, we engage ourselves in the client's needs from the smallest to the most complex and diverse projects. We work closely with our partners to approach every situation with the utmost professionalism and courtesy to execute the job efficiently on budget and on time. Safety is always the first priority and the core of our work culture.

To ensure the highest level of safety at our manufacturing facility, as well as on our job sites, we have an extensive Health and Safety Program backed by our employees and partners, working every day to achieve the goal of zero injuries in the workplace.

We have over 40 years of history developing the landscape of Ontario, Canada, and abroad. With our headquarters located in Bolton, Ontario just northwest of Toronto, examples of our work and craftsmanship can be seen in many iconic buildings around the Toronto downtown core.





BENSON

...because performance matters™



WE ARE COR
Certificate of Recognition
(COR) verifies that a construction-related company's health and safety program has reached a national standard. In Ontario, Infrastructure Health and Safety Association (IHSA) offers the Certificate of Recognition.



WE ARE LEAGUE OF CHAMPIONS MEMBERS
Since 2016, the League of Champions Jersey is a symbol that represents: safety excellence and commitment.

Benson Steel has worked to inspire and influence workers, stake holders, partners and clients to commit, collaborate, and take action to improve safety culture through awareness, education, promotion, and recognition leading to safer construction workplaces in Ontario.

At the core of our work culture, safety is always the first priority.



WE ARE ISO 45001 CERTIFIED
A globally recognized standard that demonstrates an effective occupational health and safety (OHS) management system. The standard identify and minimize work-related threats to employees by implementing preventive measures.



WE ARE ISO 9001 CERTIFIED
A globally recognized standard for quality management. It helps organizations of all sizes and sectors to improve their performance, meet customer expectations and demonstrate their commitment to quality.



WE ARE A GREAT PLACE TO WORK
We are proud to be certified as a Great Place to Work® keeping our commitment to the highest standards of quality in the industry providing a safe and comfortable work place that employees look forward to come every day.

VALUES

SAFETY • INTEGRITY • INNOVATION
COLLABORATION • INCLUSIVENESS

MISSION

To create an environment that builds success for all of our stakeholders

VISION

To deliver structural solutions to building projects in a safe, innovative and sustainable manner



WHAT WE DO

PROJECT MANAGEMENT

From the smallest project to the most complex and diverse project, we engage ourselves in the client's needs. We learn the project nuances, specifications, and scope of work to approach the most difficult situations with solutions and professionalism to execute the project on budget and on time.

PLANNING AND BUDGETING

The estimating and executive team at Benson Steel are available to assist clients, forecast budgets, and prepare cost analysis on future projects from the early development stages. This includes conceptual and alternate steel solutions through to design.

ENGINEERING

We have the capacity to engineer in house connection details and also supply alternative designs for secondary solutions. We also offer value engineering to assist the Engineer of Record with primary design build solutions.

LOGISTICS

We have in depth experience with shipping overseas by truck, ship, and by air. We have worked in numerous locations across the world.

We work closely with our clients to develop logistic plans. This includes detailed layout drawings on where the product will be landed on the site for safe, quick, easy and efficient erection and execution of the field services.



OUR TEAM



STEPHEN BENSON
CHIEF EXECUTIVE
OFFICER



ALEX BALDISSERA
PRESIDENT



BOB BENSON
CHIEF OPERATIONS
OFFICER



MARK STAPLES
VICE PRESIDENT
CONTRACT SALES



BARB BARRON
EXECUTIVE
OFFICE MANAGER

WHY BENSON?

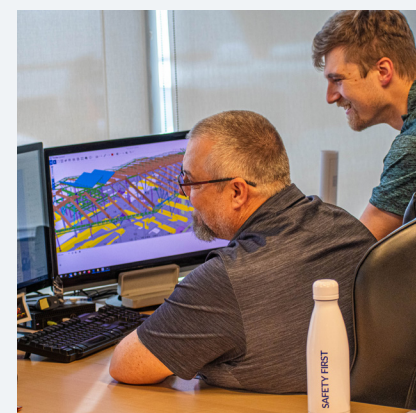
Teamwork is everything. From employee relationships to clients, to sub trades and suppliers, we all win together by creating safe, stable and profitable environments.

At Benson Steel, safety is always our first priority. At our manufacturing facility as well as on our job sites, Benson Steel is COR certified and has an extensive Health and Safety Program, committed to achieving the goal of zero incidents in the workplace.

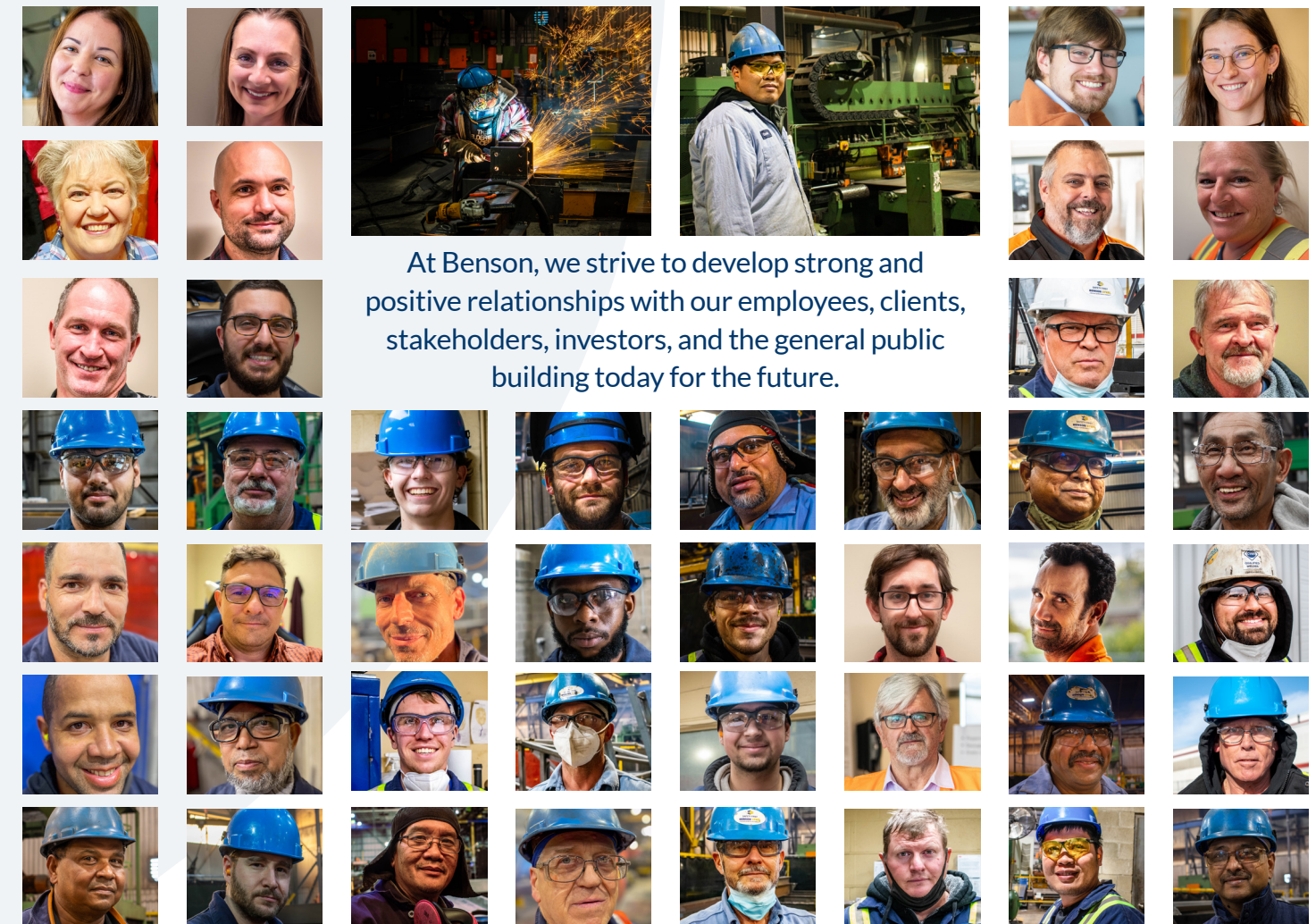
Challenging projects require the latest technology and solutions in drafting engineering and fabrication.

Benson Steel continually invests in a wide range of specialized equipment and technology for our CNC production shop.

Our plant technology combined with our constant search for innovation, as well as our dedicated staff enables us to continually improve efficiency, effectiveness, quality and cost reduction; ensuring unsurpassed client satisfaction and loyalty.



A diverse group of talented people with extraordinary passion for what they do create the Benson team.



At Benson, we strive to develop strong and positive relationships with our employees, clients, stakeholders, investors, and the general public building today for the future.



DIVERSITY & INCLUSIVENESS

We work every day to create an inclusive environment where all of our employees and stakeholders have equal opportunities to reach their full potential and where individual differences are seen as a positive asset.

We believe great ideas come from different perspectives and experiences.



At Benson we recognize equally all employees regardless of gender expression, gender identity and sexual orientation.



We are dedicated to build continuous relationships with Indigenous peoples and communities. We are committed to do our part and help Canada evolve into an inclusive and just society.

Benson Steel supports equal, respectful and fair treatment of all races, religions, creeds and cultures.

IN OUR COMMUNITY

Benson Steel is proud to be an active member in our community. We believe in being a responsible member, leading and championing the different causes we care deeply about.

At Benson we believe in the value of physical activity as a way to promote and develop healthy communities helping to prevent a wide range of social issues.

We support a number of events, organizations and high-performance athletes through sponsorship, and the promotion of healthy active living.



ENVIRONMENTAL POLICY

Benson Steel is committed to operating its facilities and sites in a manner that meets or exceeds applicable environmental laws and is protective of the environment and public health.

We are aware of the importance of our natural resources to the quality of human life and strive to continuously improve our procedures and management of our every day responsibilities.

At Benson, everywhere we work we abide by the specific environmental policies and practices regarding our products, manufacturing, operations, purchase and disposition of assets and liabilities from past operations.

We place emphasis on promptly addressing environmental concerns in relationships with our employees, our customers, our shareholders, the communities in which we operate, and regulatory authorities.



PROCESS CAPABILITIES
& FABRICATION POWER
**DRIVE OUR
PERFORMANCE
METRICS**



BENSON

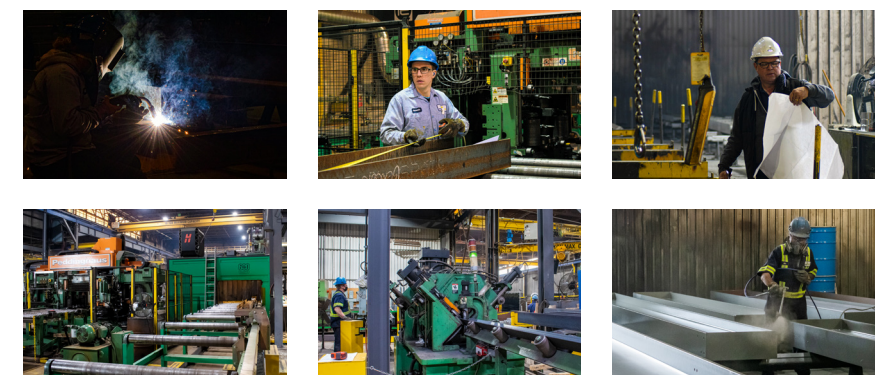
...because performance matters™

A group of talented people with extraordinary passion for what they do create the Benson team.



Challenging projects require the latest technology in drafting, engineering and fabrication solutions. **Benson Steel** continually invests in a wide range of specialized equipment and technology for our CNC production shop.

Our plant technology combined with our constant search for innovation, as well as our dedicated staff, enables us to continually improve efficiency, effectiveness, quality and cost reduction, ensuring unsurpassed client satisfaction and loyalty.



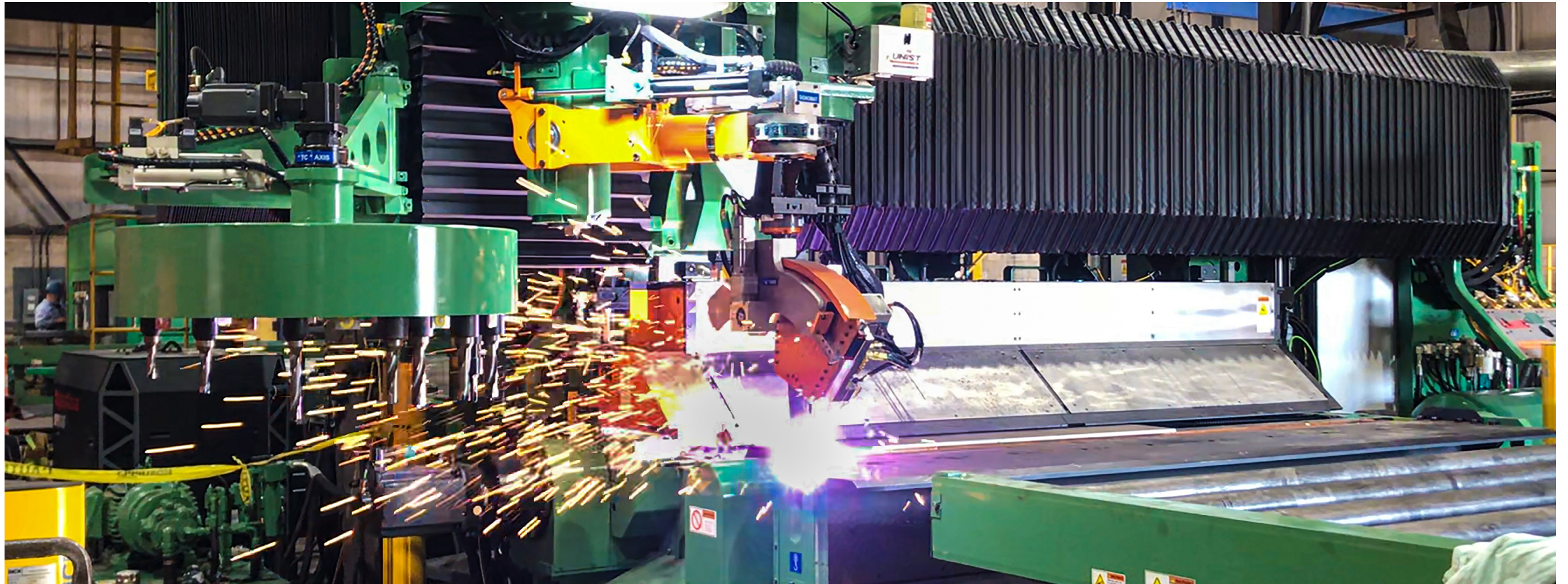


PEDDINGHAUS ADVANTAGE-2 CNC DRILL LINE

Our Advantage-2 carbide drill line from Peddinghaus utilizes automatic tool changer technology and completely electronic spindle motion. This provides the ultimate combination of agility and strength.

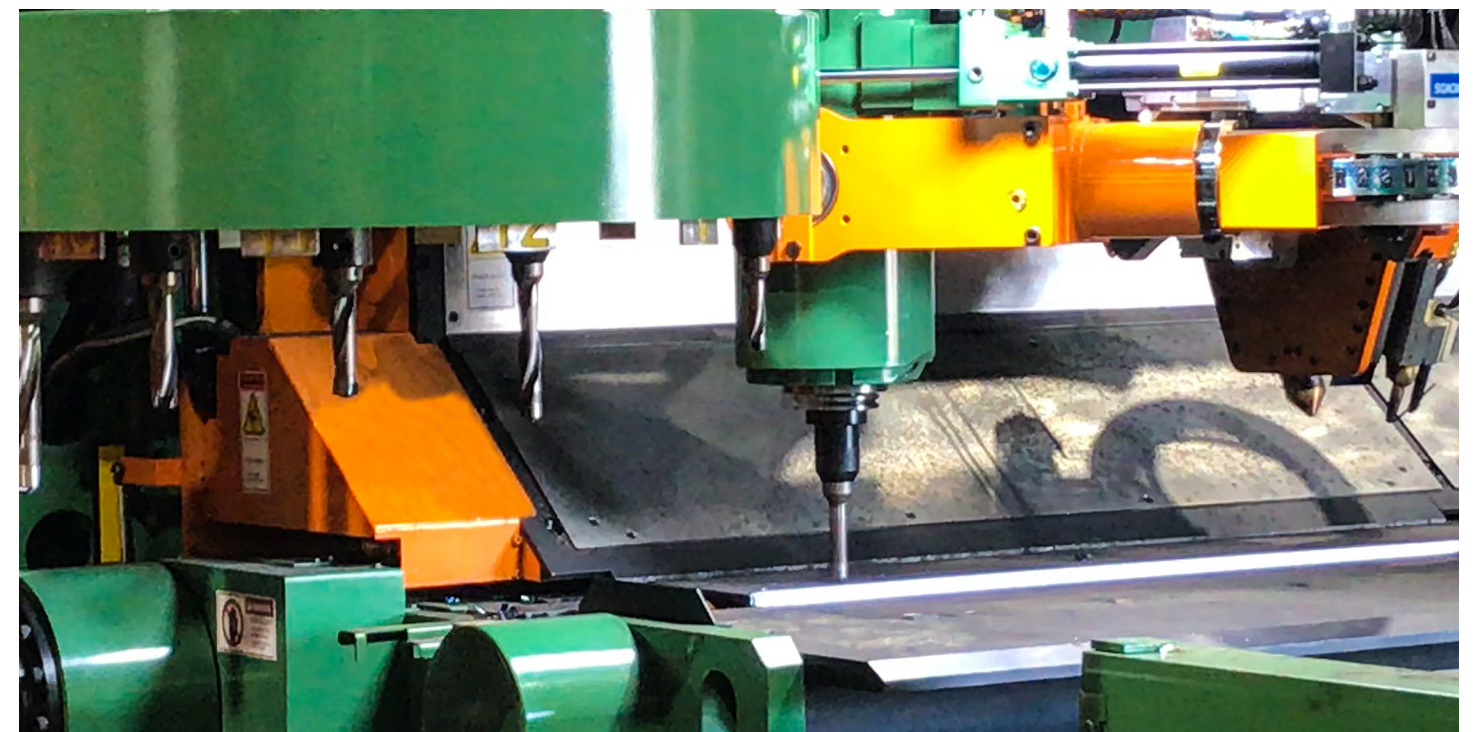
It is capable of processing up to 150 tons of structural steel in a typical 40-hour work week. With its great versatility we have the ability to drill, mill, tap, countersink and scribe. We can drill any hole pattern of depth required for the most complex projects.





PEDDINGHAUS HSFDB-C PLATE PROCESSOR

The all-in-one HSFDB-C CNC plate processor boasts features such as bevel cutting, milling, counter sinking SignoMat stamping, 12-Station Tool Changer Siemens Spindle Motors,. This machine can handle plate up to 4" thick, **that's performance!**





INOVATECH STEELPRO600

With our Plasma fueled Steel PRO600 we are able to process almost every structural member available. This includes I-beams, WF-beams, square or rectangular tubing, angle, channel, flat bar, and round pipe.

The operations the SteelPro 600 can execute include holes, copes, side cutting, beveling, pipe cutting, bird mouths and marking.



PEDDINGHAUS ANGLEMASTER-643

Detail components make up the smallest tonnage of any fabricators' workload, but consistently demand the highest amount of labor. **Benson Steel** uses the Peddinghaus anglemaster-643 as a productivity and accuracy tool for preparing all angle detail material. It can handle angles from 2x2x1/4 to 6x6x5/8. The 643 covers our need to automate punching, nibbling, shearing and marking for angle and flat bar to serve our projects requirements.



PEDDINGHAUS PEDDIBLAST

Providing the best results with the least amount of abrasive Meet our PEDDIBLAST: With its 4x15kW motor Power turbine, no distance bolts and 6 blades per turbine that offer more free abrasive flow. The PeddiBlast fires abrasive shots at a speed of 190 meters/second. This amount of force is utilized to strip rust and scale off of profiles allowing for cleaner welding and painting applications.

WE KNOW CLEAN!



LATEST ADDITION SHOP EXPANSION

In July 2021 we opened our new addition to our fabrication shop.

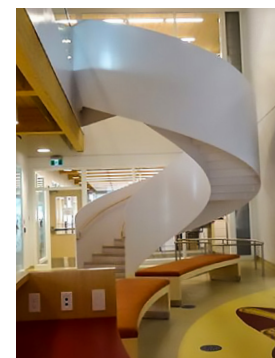
This new section of our plant has a current lifting per piece capacity of up to 24 tons indoors and outdoors.

Cutting-edge equipment provide a quality based competitive advantage and makes our shop one of the best equipped and efficient in the industry.





THE BRITT RESIDENCES
Toronto, Ontario, Canada



CANADIAN ARCTIC RESEARCH STATION
With a detail of the special interior steel stairs.
Cambridge Bay, Nunavut, Canada.



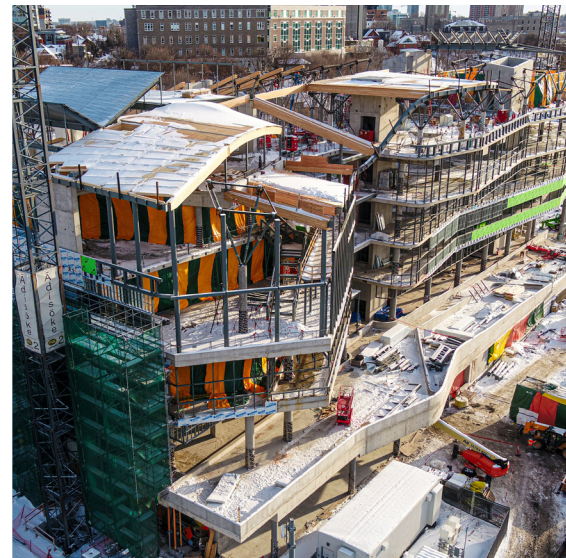
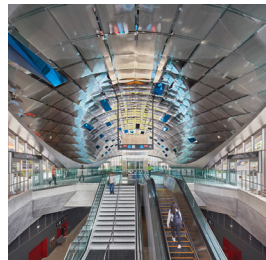
TTC TRANSIT STATION
Pioneer Village Toronto, Ontario, Canada

SHOWCASE PROJECTS

REDEFINING VERSATILITY

When art meets with steel and architecture, powerful experiences take shape

With over 43 years of business experience, we have completed work in many different locations across Canada and around the world including Tanzania, Bermuda, Grand Cayman, Mexico, Canadian High Arctic, Turkmenistan, and the United States of America. From industrial, commercial and institutional structures to bridges and special projects we have done an exceptionally wide range of work.



Ādisōke Ottawa Public Library & Archives
Canada joint facility. Ottawa, Ontario, Canada
Much more than a house for books

In late 2021 Benson Steel was awarded the contract by PCL Ottawa to fabricate and erect the steel structure and mass timber systems of the new Ottawa Public Library & Archives Canada joint facility. We are proud to be a part of the team to bring to reality another Canadian landmark.



CN TOWER VESTIBULE Toronto, Ontario, Canada



TTC VAUGHAN STATION Toronto, Ontario, Canada



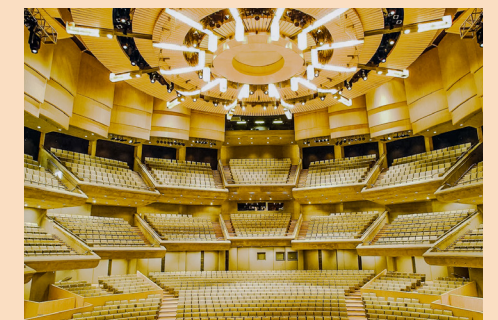
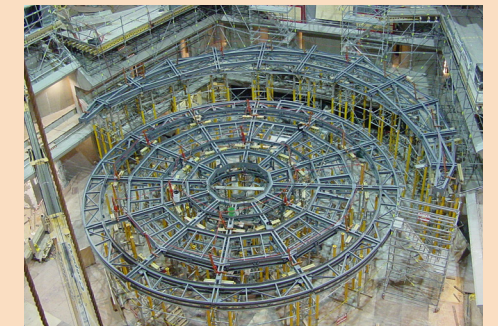
SPORTSNET BUILDING Toronto, Ontario, Canada



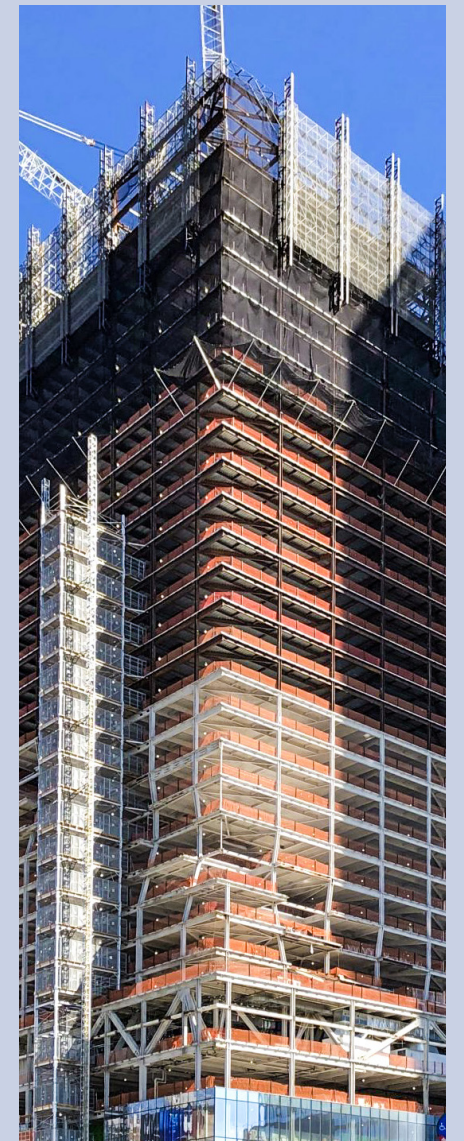
Art Gallery of Ontario Toronto, Ontario, Canada



RIPLEY'S Aquarium Toronto, Ontario, Canada



ROY THOMPSON HALL Renovation of the Concert Hall inside. Toronto, Ontario, Canada



SPIRAL TOWER 66 Hudson Yards, New York City, U.S.A. Benson provided a 460-ton steel-mesh Cocoon. This technology hydraulically crawls up the sides of the building as they erect structural steel around the tower's core. Driven by its own power, the cocoon travel between floors without the aid of a crane making a protective shell for workers, equipment and parts that makes skyscraper construction safer and faster.



IQUALUIT AIRPORT
We fabricated and erected the new terminal building and Fire services hangar of the Iqaluit International Airport that serves Iqaluit, the only city in the northern territory of Nunavut, Canada.

BILLY BISHOP AIRPORT,
Benson fabricated the structural steel for this airport that welcomes 2.8 million travelers each year. It is Canada's sixth-busiest airport that offers passenger service to the United States. Billy Bishop Airport is renowned for its unique travel experience, efficiency and customer service.

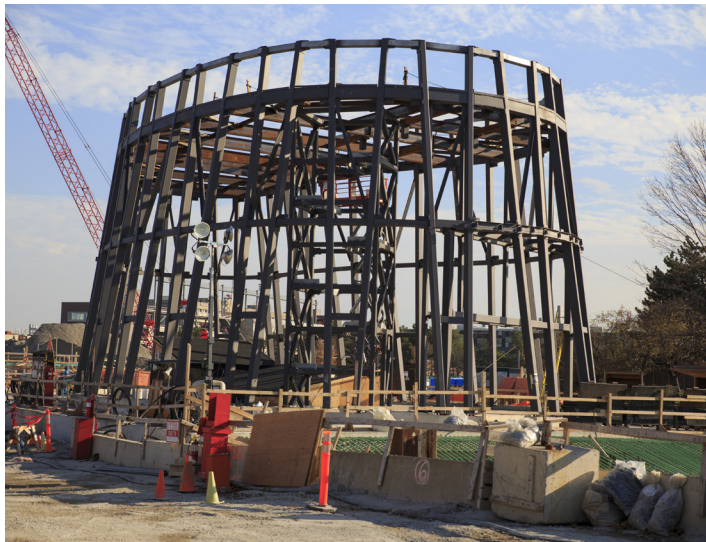




TTC Vaughan Station (Toronto Transit Commission). Vaughan, Ontario, Canada



CANADIAN HIGH ARCTIC RESEARCH Cambridge Bay, Iqaluit, Canada



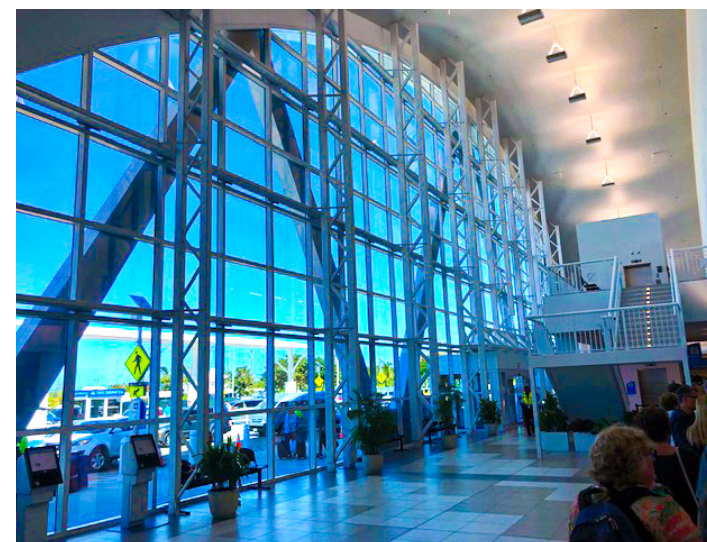
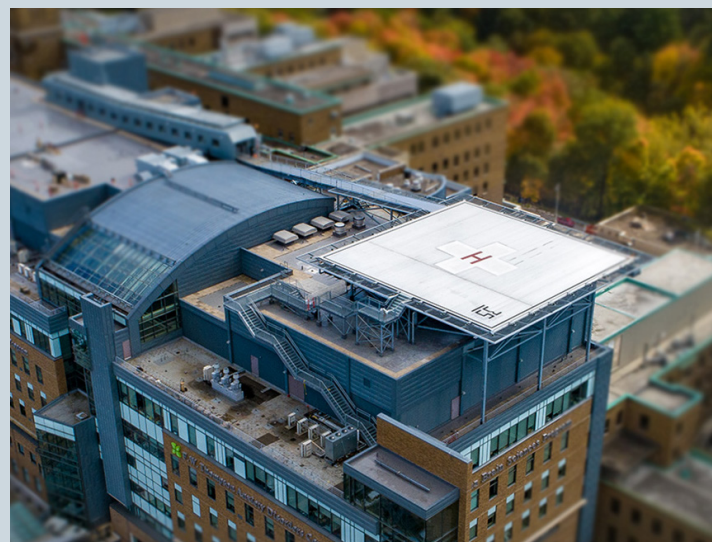
TTC Pioneer Village Station (Toronto Transit Commission). Toronto, Ontario, Canada



IQALUIT AIRPORT Iqaluit, Canada

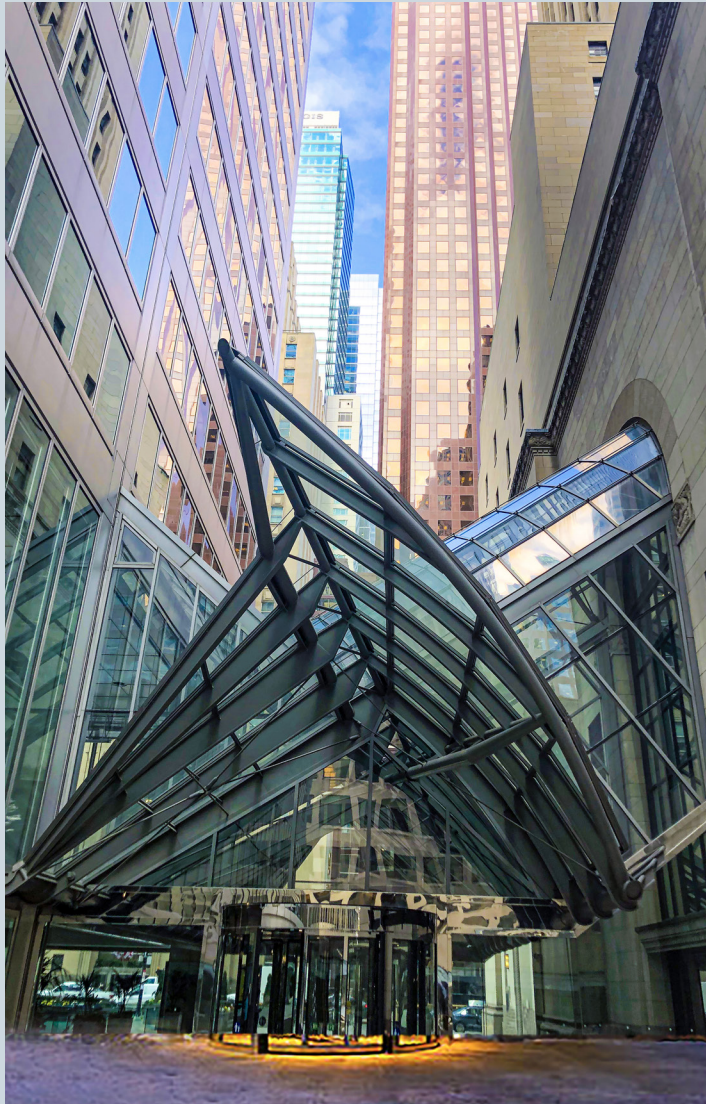


SUNNYBROOK HOSPITAL HELIPAD. Toronto, Ontario, Canada



OWEN ROBERTS INTERNATIONAL AIRPORT, Grand Cayman, Cayman Islands





CIBC COMMERCE COURT
Toronto, Ontario, Canada.



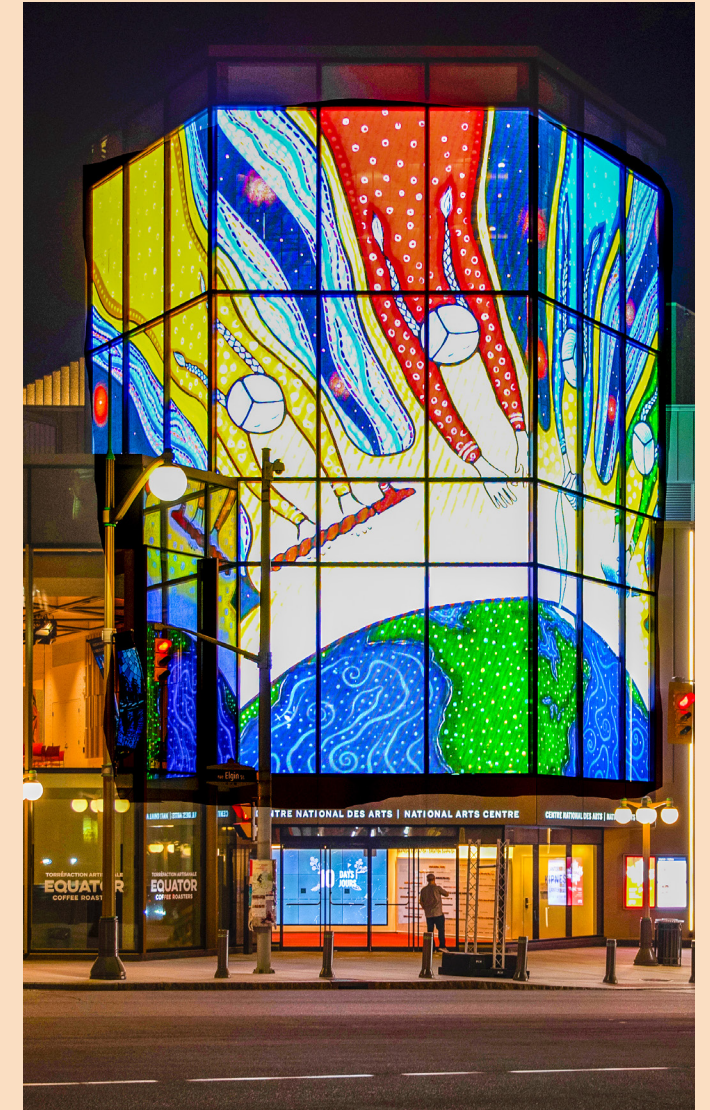
BAYCREST. HOME FOR THE AGED
Toronto, Ontario Canada.



INNOVATION COMPLEX
University of Toronto, Mississauga,
Ontario, Canada.



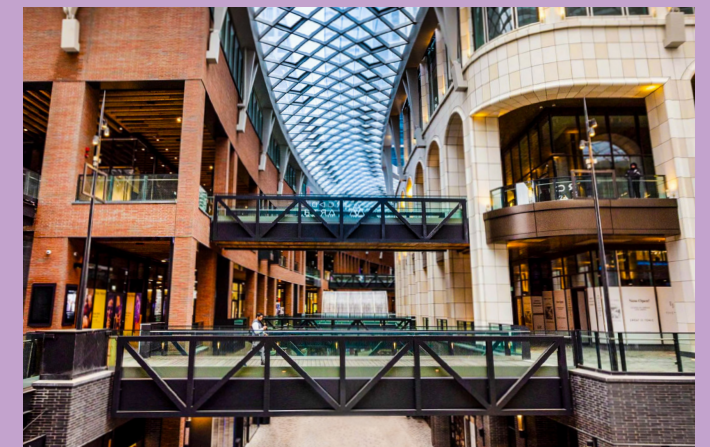
**CASSIE CAMPBELL
COMMUNITY CENTRE**
Bramton, Ontario, Canada



CANADA NATIONAL ARTS CENTRE
Ottawa, Ontario, Canada



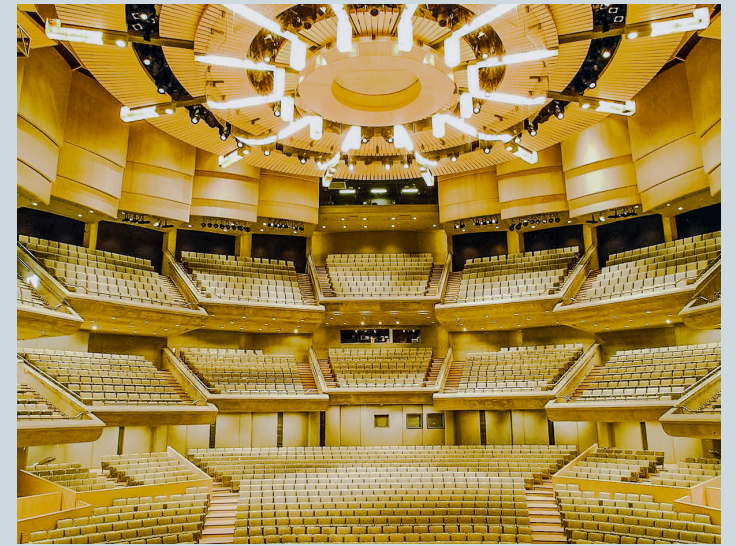
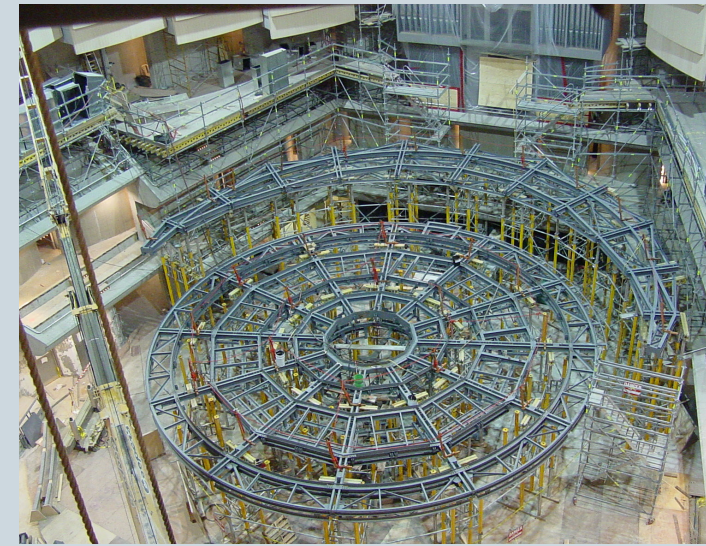
NATIONAL BALLET SCHOOL. Toronto, Ontario, Canada



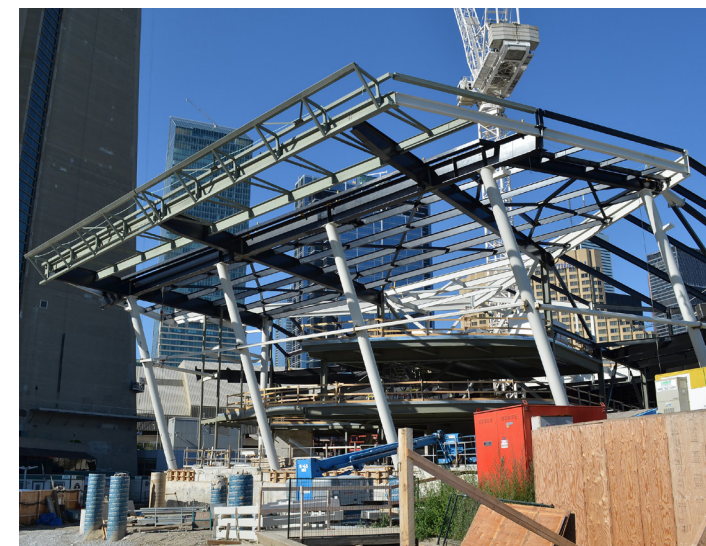
THE WELL PEDESTRIAN BRIDGES
Toronto, Ontario, Canada



THE BRITT RESIDENCES Toronto, Ontario, Canada



ROY THOMPSON HALL Renovation of the Concert Hall inside. Toronto, Ontario, Canada



RIPLEY'S AQUARIUM Toronto, Ontario, Canada



L.F. WADE INTERNATIONAL AIRPORT Bermuda



PAN AM AQUATIC CENTRE Toronto, Ontario, Canada. In partnership with Walters Group



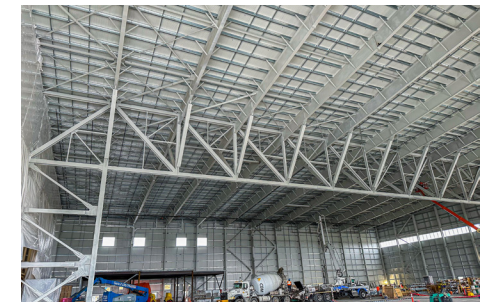
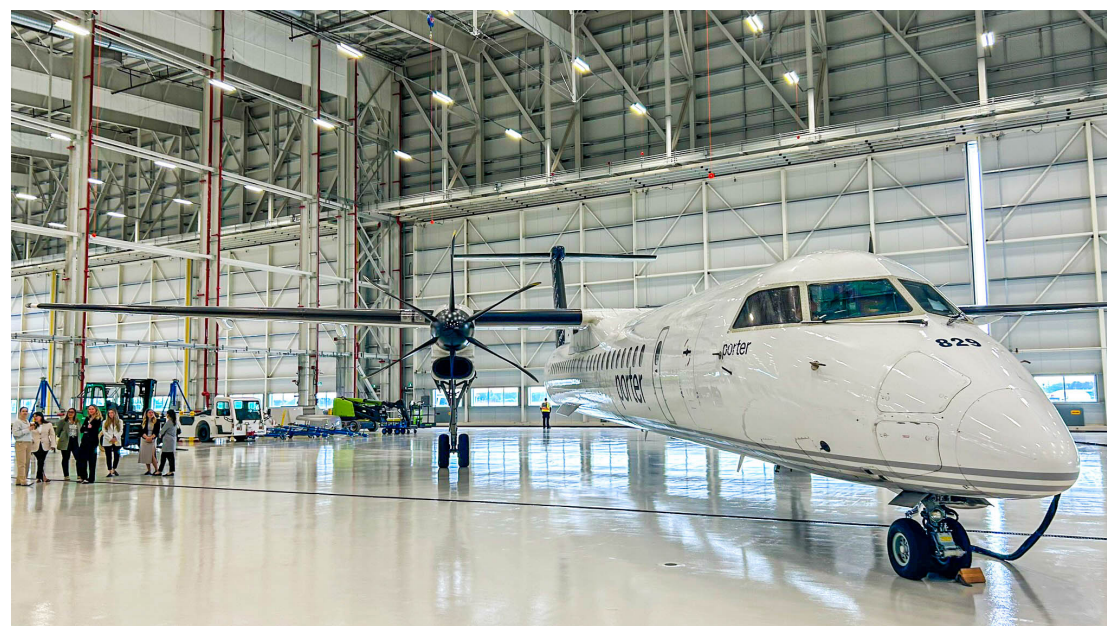
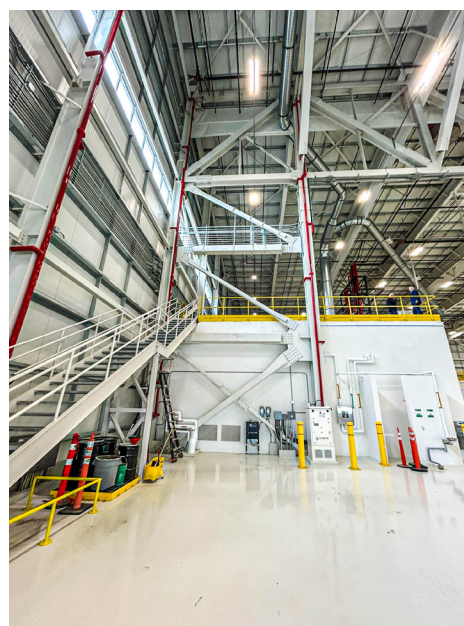
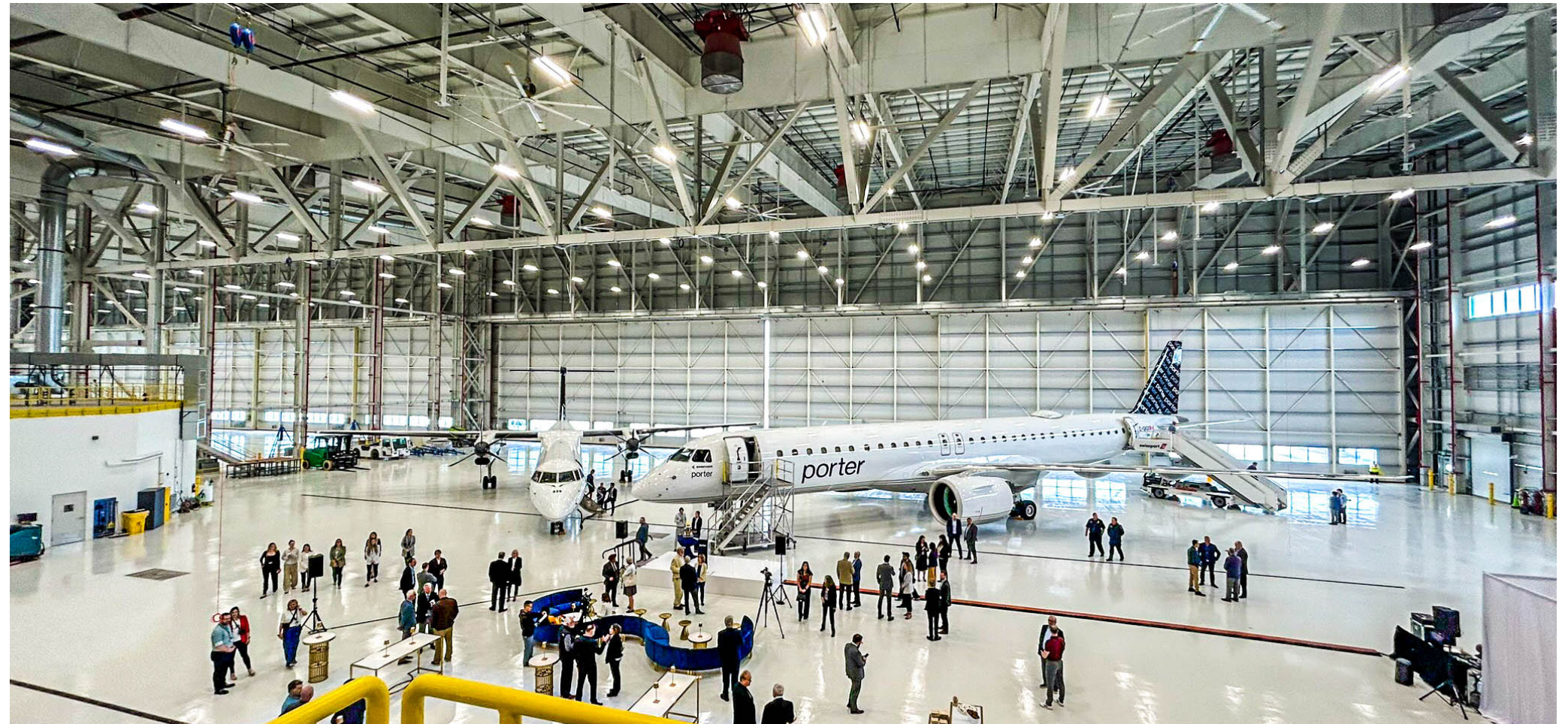
BENSON

...because performance matters™

SUCCESS REDEFINED AGAIN

In 2022 Benson Steel started fabricating the two new Porter Airlines Hangars for aircraft maintenance at the Ottawa airport. On May 21, 2024 Porter Airlines inaugurated this new aircraft hangars and maintenance base. The facilities include two large hangars, which can accommodate up to eight planes to maintain Porter's fleet of jet and propeller planes. Porter has 33 Embraer E195-E2's in service and 29 DeHavilland Dash 8-400's.

This project helps position Ottawa airport for future growth with a critical piece of transportation infrastructure for our national capital region. The hangar serves as a maintenance base, with 200 local hires, including 160 aircraft maintenance engineers, shop technicians and administrative support staff; at the same time it helps position Ottawa for future growth with a critical piece of transportation infrastructure for our national capital region.





BENSON

...because performance matters™

72 Commercial Rd. Bolton, Ontario, L7E 1K4 Canada
Tel. 905-857-0684 • Fax: 905-857-4005



A Proudly Canadian Company

www.bensonsteel.com

