

BENSON

...because performance matters™



In the
CARIBBEAN



BENSON
...because performance matters™

Established in 1980, Benson Steel provides an extensive range of services including design, supply, fabrication and erection of structural steel.

Distinguished for tailoring projects to suit each client's unique and custom requirements, Benson Steel has applied our unique expertise to successfully complete award-winning projects throughout Canada and abroad.

1988 was the year Benson Steel started to contribute to Bermuda by sending the structural steel for the largest new build of the time: Cumberland House.

Since then Benson has established a strong association with SAL Ltd. to represent us on the island. 34 years and over 100 principle projects later, the relationship is strong and growing.

Over the years we have established many strong relationships with the construction Industry in the Caribbean and today we are seen as one of the most reliable structural steel suppliers in the region.

Now in 2022 we are happy to add miscellaneous metals to our Caribbean portfolio. We are now able to offer the solution to any structural project you may have.

The estimating team at Benson is available to assist clients to forecast budgets and prepare cost analysis on projects at the early development stages. We have in-depth experience in shipping overseas by truck, ship and by air.

We work closely with our clients to develop plans to support their needs and help their field teams address site logistics.



Cumberland House, Bermuda



Point House, Bermuda



Bus Station, Bermuda.



Bacardí Building, Bermuda



Reef Building
Bermuda



New Testament Church, Bermuda



Yellow Market, Bermuda



We are now able to directly supply the miscellaneous metals to build stairs, decks and any other project needs our clients may have.

L.F. Wade International Airport, Bermuda



OWEN ROBERTS INTERNATIONAL AIRPORT, CAYMAN ISLANDS



LOGISTICS

The Owen Roberts International Airport project was a modification and addition to the existing operating airport. Everything had to be done in stages to facilitate the ongoing airport operations. To achieve our clients goals for delivery on time and budget we develop plans that allows us to manage the complexity of every project.



OUR CURRENT PROJECTS

IN THE AREA

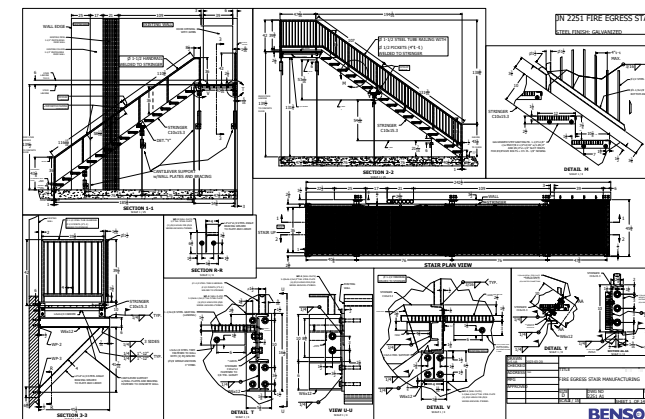
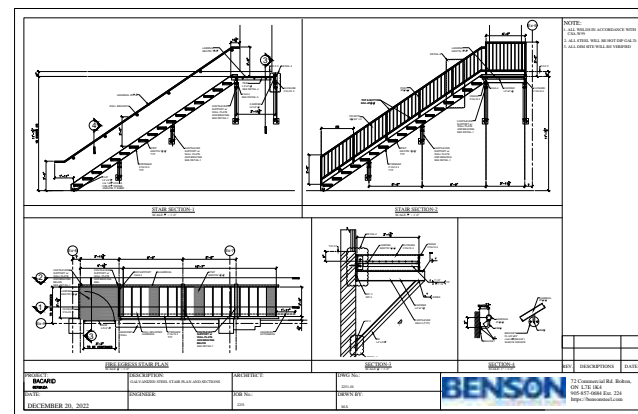


BACARDI Heatquarters Hamilton, Bermuda.

REDEFINING VERSATILITY

We now have the capability to fabricate miscellaneous metal structures.

As we expand our knowledge and network, we have grown to be able to offer services beyond conventional structural Work. We are now designing, fabricating and supplying the fire stairs for the addition to the Bacardi headquarters in Hamilton Bermuda.



33 Church St. Hamilton, Bermuda.

A 60 unit residential building at 33 Church Street, with two levels of underground parking and a roof top deck area for residents.

In 2021-22 Benson fabricated and shipped the structural steel for the new Apartment House Development with Retail & Property Offices.

WE TURN IDEAS INTO WORKS OF ART

An award winning company
focused on delivering
extraordinary services and
products for every project,
every time.

At Benson, we engage ourselves in the client's needs from the smallest to the most complex and diverse projects. We work closely with our partners to approach every situation with the utmost professionalism and courtesy to execute the job efficiently on budget and on time. Safety is always the first priority and the core of our work culture.

To ensure the highest level of safety at our manufacturing facility, as well as on our job sites, we have an extensive Health and Safety Program backed by our employees and partners, working every day to achieve the goal of zero injuries in the workplace.

We have over 40 years of history developing the landscape of Ontario, Canada, and abroad. With our headquarters located in Bolton, Ontario just northwest of Toronto, examples of our work and craftsmanship can be seen in many iconic buildings around the Toronto downtown core.





THE BRITT RESIDENCES
Toronto, Ontario, Canada



CANADIAN ARCTIC RESEARCH STATION
With a detail of the special interior steel stairs. Cambridge Bay, Nunavut, Canada.



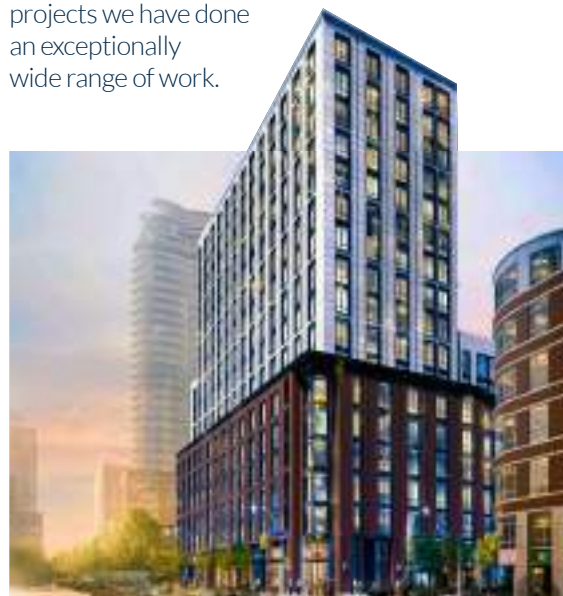
TTC TRANSIT STATION
Pioneer Village Toronto, Ontario, Canada

SHOWCASE PROJECTS

REDEFINING VERSATILITY

When art meets with steel and architecture, powerful experiences take shape

With over 41 years of business experience, we have completed work in many different locations across Canada and around the world including Tanzania, Bermuda, Grand Cayman, Mexico, Canadian High Arctic, Turkmenistan, and the United States of America. From industrial, commercial and institutional structures to bridges and special projects we have done an exceptionally wide range of work.



ROSEHILL TOWER Toronto, Ontario, Canada



CN TOWER VESTIBULE Toronto, Ontario, Canada



TTC VAUGHAN STATION Toronto, Ontario, Canada



SPORTSNET BUILDING Toronto, Ontario, Canada



A DANIELS Group project, with an independent Steel frame, is the first residence building in Ontario to be designed with the GirderSlab® technology.

We are thrilled to welcome GirderSlab® technologies into the Benson Family.



Art Gallery of Ontario Toronto, Ontario, Canada



RIPLEY'S Aquarium Toronto, Ontario, Canada



ROY THOMPSON HALL Renovation of the Concert Hall inside. Toronto, Ontario, Canada



SPIRAL TOWER 66 Hudson Yards, New York City, U.S.A. Benson provided a 460-ton steel-mesh Cocoon. This technology hydraulically crawls up the sides of the building as they erect structural steel around the tower's core. Driven by its own power, the cocoon travel between floors without the aid of a crane making a protective shell for workers, equipment and parts that makes skyscraper construction safer and faster.



IQALUIT AIRPORT We fabricated and erected the new terminal building and Fire services hangar of the Iqaluit International Airport that serves Iqaluit, the only city in the northern territory of Nunavut, Canada.

BILLY BISHOP AIRPORT, Benson fabricated the structural steel for this airport that welcomes 2.8 million travellers each year. It is Canada's sixth-busiest airport that offers passenger service to the United States. Billy Bishop Airport is renowned for its unique travel experience, efficiency and customer service.





OUR TEAM



STEPHEN BENSON
PRESIDENT
& CEO



BOB BENSON
CHIEF OPERATIONS
OFFICER



ALEX BALDISSERA
VICE PRESIDENT
SALES & ESTIMATING



MARK STAPLES
VICE PRESIDENT
CONTRACT SALES



BARB BARRON
EXECUTIVE
OFFICE MANAGER

WHY BENSON?

Teamwork is everything.
From employee relationships to clients,
to sub trades and suppliers, we should all win together by
creating safe, stable and profitable environments.

At Benson Steel, safety is
always our first priority.
At our manufacturing facility
as well as on our job sites,
Benson Steel is COR certified and has an
extensive Health and Safety Program,
committed to achieving the goal of zero
incidents in the workplace.

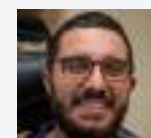
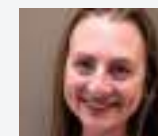
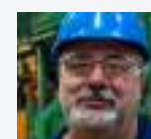
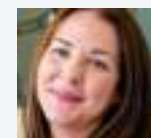
Challenging projects require the latest
technology and solutions in drafting
engineering and fabrication.

Benson Steel continually invests in a
wide range of specialized equipment
and technology for our CNC production
shop.

Our plant technology combined with our
constant search for innovation, as well as
our dedicated staff enables us
to continually improve efficiency,
effectiveness, quality and cost
reduction; ensuring unsurpassed client
satisfaction and loyalty.



A diverse group of talented
people with extraordinary
passion for what they do create
the Benson team.



At Benson, we strive to develop strong and
positive relationships with our employees, clients,
stakeholders, investors, and the general public
building today for the future.



DIVERSITY & INCLUSIVENESS

We work every day to create an inclusive environment where all of our employees and stakeholders have equal opportunities to reach their full potential and where individual differences are seen as a positive asset.

We believe great ideas come from different perspectives and experiences.



At Benson we recognize equally all employees regardless of gender expression, gender identity and sexual orientation.



We are dedicated to build continuous relationships with Indigenous peoples and communities. We are committed to do our part and help Canada evolve into an inclusive and just society.

Benson Steel supports equal, respectful and fair treatment of all races, religions, creeds and cultures.

IN OUR COMMUNITY

Benson Steel is proud to be an active member in our community. We believe in being a responsible member, leading and championing the different causes we care deeply about.

At Benson we believe in the value of physical activity as a way to promote and develop healthy communities helping to prevent a wide range of social issues.

We support a number of events, organizations and high-performance athletes through sponsorship, and the promotion of healthy active living.

ENVIRONMENTAL POLICY

Benson Steel is committed to operating its facilities and sites in a manner that meets or exceeds applicable environmental laws and is protective of the environment and public health.

We are aware of the richness and importance of our natural resources to the quality of human life and strive to continuously improve our procedures and management of our every day responsibilities.

Our management and all employees everywhere we work must abide by the specific environmental policies and practices regarding our products, manufacturing, operations, purchase and disposition of assets and liabilities from past operations.

We place emphasis on promptly addressing environmental concerns in relationships with our employees, our customers, our shareholders, the communities in which we operate, and regulatory authorities.



PROCESS CAPABILITIES
& FABRICATION POWER

DRIVE OUR PER FOR MANCE

Challenging projects require the latest technology in drafting, engineering and fabrication solutions. **Benson Steel** continually invests in a wide range of specialized equipment, software and technology for our CNC production shop.

Our plant technology combined with our constant search for innovation, as well as our dedicated staff, enables us to continually improve efficiency, effectiveness, quality and cost reduction, ensuring unsurpassed client satisfaction and loyalty.

PEDDINGHAUS PEDDIBLAST



WE KNOW CLEAN!

Providing the best results with the least amount of abrasive Meet our PEDDIBLAST: With its 4x15kW motor Power turbine, no distance bolts and 6 blades per turbine that offer more free abrasive flow. The PeddiBlast fires abrasive shots at a speed of 190 meters/second. This amount of force is utilized to strip rust and scale off of profiles allowing for cleaner welding and painting applications.



INOVATECH STEELPRO600

With our Plasma fueled Steel PRO600 we are able to process almost every structural member available. This includes I-beams, WF-beams, square or rectangular tubing, angle, channel, flat bar, and round pipe.

The operations the SteelPro 600 can execute include holes, copes, side cutting, beveling, pipe cutting, bird mouths and marking.



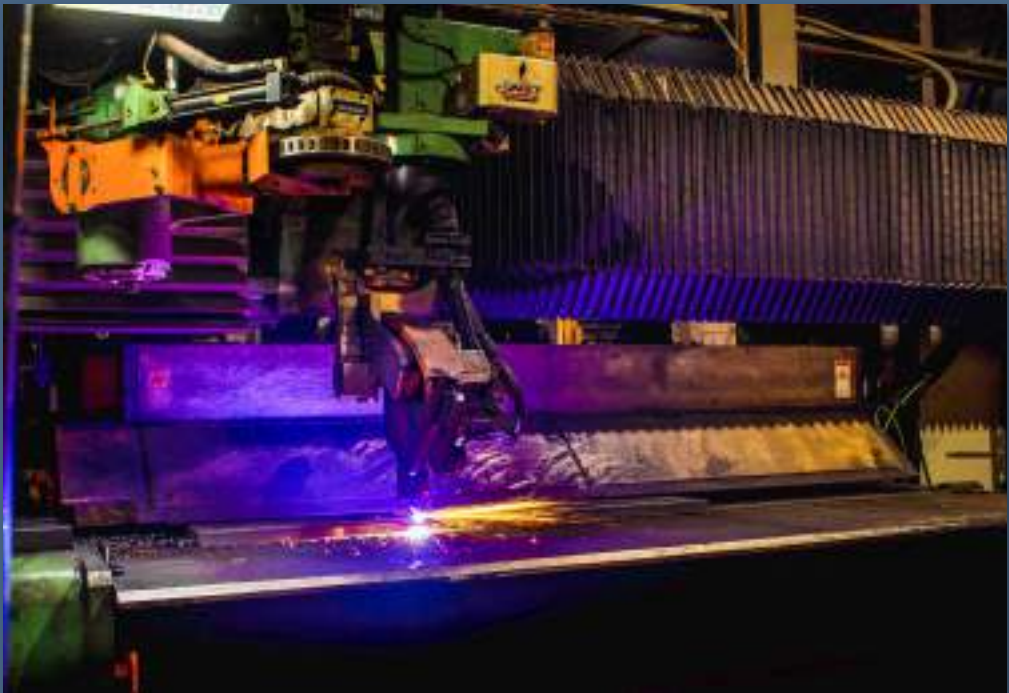
IN HOUSE PAINTING SHOP



In July 2021 we started operations in our new paint shop that specializes in exotic painting of structural steel components.

This plant has a current lifting per piece capacity of up to 24 tons indoors and outdoors.

Cutting-edge equipment provide a quality based competitive advantage and makes our shop one of the best equipped in the industry.



PEDDINGHAUS HSFDB-C PLATE PROCESSOR

The all-in-one HSFDB-C CNC plate processor boasts features such as bevel cutting, milling, counter sinking SignoMat stamping, 12-Station Tool Changer Siemens Spindle Motors,. This machine can handle plate up to 4" thick, **that's performance!**



PEDDINGHAUS ADVANTAGE-2 CNC DRILL LINE

Our Advantage-2 carbide drill line from Peddinghaus utilizes automatic tool changer technology and three head completely electronic spindle drilling. This provides the ultimate combination of agility and strength.

It is capable of processing up to 150 tons of structural steel in a typical 40-hour work week. With its great versatility we have the ability to drill, mill, tap, countersink and scribe. We can drill any hole pattern of depth required for the most complex projects.



PEDDINGHAUS ANGLEMASTER 643



Detail components make up the smallest tonnage of any fabricators' workload, but consistently demand the highest amount of labor. Benson Steel uses the Peddinghaus anglemaster-643 as a productivity and accuracy tool for preparing all angle detail material. It can handle angles from 2x2x1/4 to 6x6x5/8. The 643 covers our need to automate punching, nibbling, shearing and marking for angle and flat bar to serve our projects requirements.



A Proudly Canadian Company 
www.bensonsteel.com

We are ready to solve your structural steel and miscellaneous metals needs.

Contact us: 1(905) 857-0684

Bob Benson: bbenson@bensonsteel.com

or Alex Baldissera: abaldissera@bensonsteel.com

72 Commercial Rd. Bolton Ontario L7E 1K4, Canada

Find us on Social Media:

